

SANTIAGO CALA
ARCHITECTURE PORTFOLIO



Santiago Calà
Mobile +44 7706170716
Email: santicala@mail.com
www.santiagocala.com

Profile

Architect with over 10 years of experience working on a wide range of international projects, from luxury residential developments to contemporary art museums. Extensive experience in the development of concept and planing documentation as well as construction packages for multi-million pound, high profile projects. Expertise managing teams and coordinating consultants, meticulous designer with great attention to details while diligent and efficient delivering exceptionally built projects.

Professional Experience

Adjaye Associates, London, UK
Project Architect
Primarily responsible for designing architectural projects, consultant liaison and coordination of several technical packages on a wide range of projects from commercial developments to cultural centres. Successful completion of different architectural projects throughout all the key RIBA stages.
2011 - Present

Minale & Mann, London, UK
Architect Designer
Concept design construction detailing of interior design projects with commercial and residential programs. Preparation of tender documentation construction monitoring.
2010 - 2011

COS Stores Interior Department, London, UK
Interior Design Architect
Fit out documentation and construction detailing for several COS stores in Europe. Also proto-typing and product design of shop furniture and accessories.
2009 - 2010

Giancarlo Mazzanti Arquitectos, Bogotá, Colombia
Architect Designer
Concept design and construction detailing of Parque España Library and other projects.
2007 - 2008

ONG&ONG Architects, Singapore
Architectural Assistant
Concept design and construction detailing of several residential projects across southeast Asia.
2006 - 2007

Education

Architectural Association, London, UK
Graduate School of Architecture
Master in Science (MSc) Sustainable Environmental Design
(Graduated with Commendation)
2010 - 2011

Pontificia Univesidad Javeriana, Bogotá, Colombia
Architecture and Urban Planing Faculty
Bachelor of architecture (BA Arch) Qualified Architect (Part 3 Equivalent)
Registered Architect SCA N0387583
2002 -2007

Awards

International Competition for Bicycle Centre & Argelia II School, Bogota, Colombia
Solo entry
3rd Place, Honorable mention and participation in the final exhibition
2017

International Competition for the refurbishment of Hospital Facade, San José, Costa Rica
Solo entry
2nd Place and cash prize.
2016

Software

Revit	• • • • •	Adobe Indesign	• • • • •
Autocad	• • • • •	Adobe Illustrator	• • • • •
Vectorworks	• • • • •	Microsoft Office	• • • • •
Sketchup	• • • • •	Vray	• • • • •
Rhino	• • • • •	Enscape	• • • • •
Adobe Photoshop	• • • • •	3dMax	• • • • •

Languages

Spanish: Native
English: Proficient
Italian: Basic



ABRAHAMIC FAMILY HOUSE

(Competition, Winning Scheme)

60.000m² Civic/Cultural Centre

Abu Dhabi, UAE

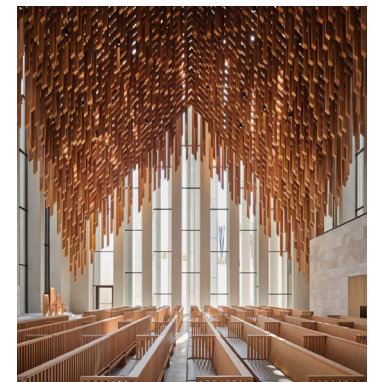
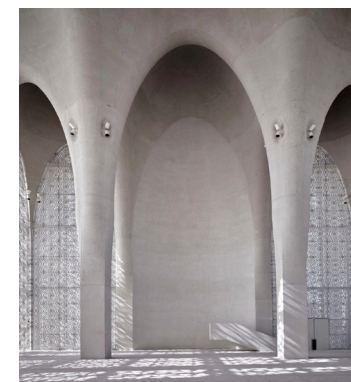
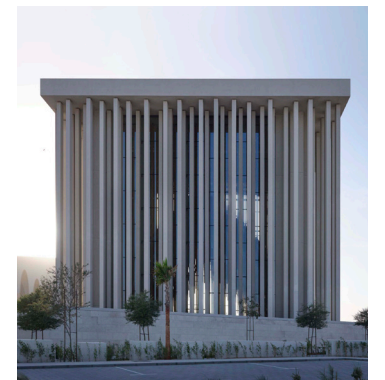
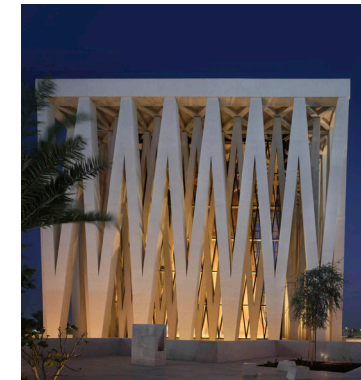
RIBA Stages 1 - 6 (Built)

2020

The Abraham Family House will be a collection of three religious spaces: a mosque, a synagogue and a church, all of which will sit upon a secular visitor pavilion. The house will serve as a community for inter-religious dialogue and exchange, nurturing the values of peaceful co-existence and acceptance among different beliefs, nationalities and cultures. Within each of the houses of worship, visitors will have the opportunity to observe religious services, listen to holy scripture, and experience sacred rituals. The fourth space — not affiliated with any specific religion — will serve as a center for all people of goodwill to come together as one. The community will also offer educational and event-based programming.

The form is translated from the three faiths, carefully using the lens to define what is similar as opposed to what is different, and using the power of these revelations to make the form. The design appears as powerful plutonic forms with a clear geometry, three cubes sitting on a plinth — though not aligned, they each have different orientations. The story then starts to become apparent through the power of the silhouette, unified with commonality and the articulation of the three forms. These structures represent a safe space, each volume illustrated with colonnades, screens and vaults to represent the sacred nature.

The discovery continues with the common ground, the public space in-between, where the difference connects. The garden is used as a powerful metaphor; a safe space where community, connection and civility combine — this space exists between the three chambers, the three faiths. The podium allows you to interact with each space with no preventative threshold, to dissolve the perceptions of not being included and encourage the celebration of this collective history and collective identity.





GEORGE STREET PLAZA BUILDING

(Competition, Winning Scheme)

1.200m² Community Centre

Sydney, Australia

RIBA Stages 1- 6 (Built)

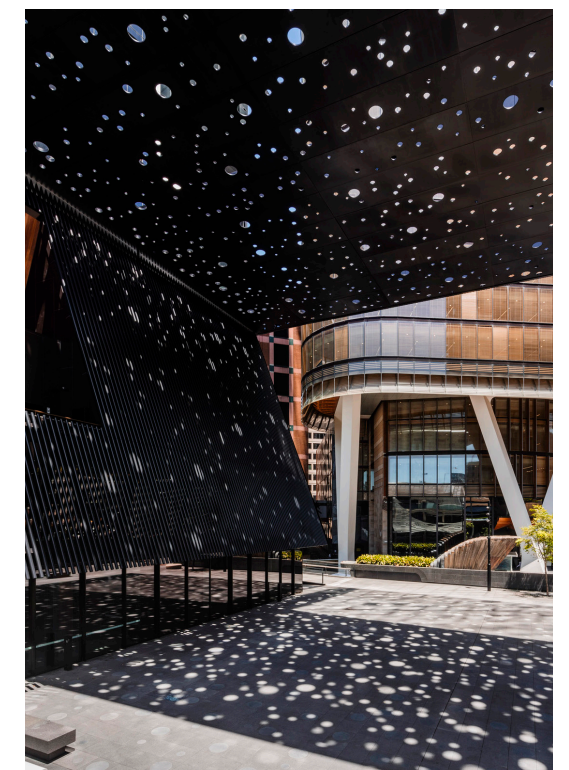
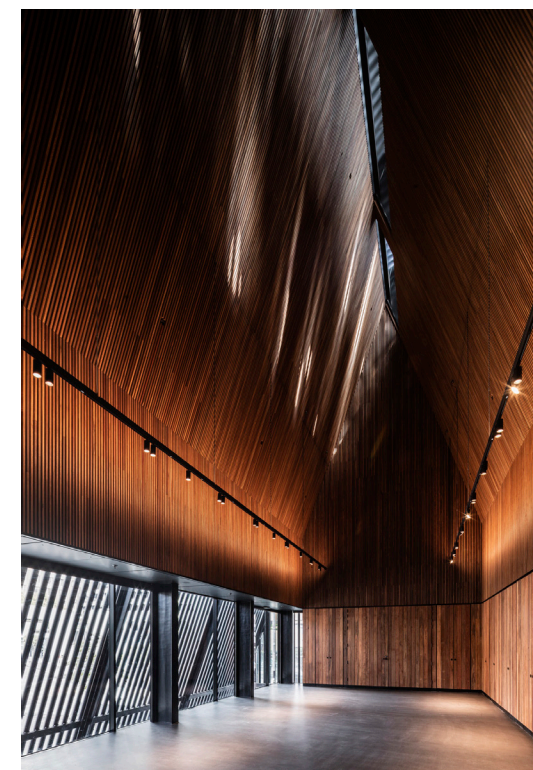
2019

Inspired by simple unitary forms and place making in Aboriginal culture, the new community building and plaza are imagined as a 'found place' based around the notion of the shelter, a symbolic respite away from the busy streetscape, that is discovered and dissolves through light.

To connect this profound centre with the sites heritage and origins, Adjaye has collaborated with Daniel Boyd, a renowned contemporary artist of Aboriginal dissent, on the projects key feature – a 27x34m perforated canopy that shelters and unites the community building and the plaza under a poetic layer of light and darkness. Inspired by Aboriginal dot painting, Boyd will curate a cosmic journey of light that filters and refracts through multiple, randomly scattered, circular, mirror-lined canopy openings.

The community building's details are intentionally simple. An open plan café, gallery space and garden terrace are wrapped under a reduced utilitarian form. It is a flexible and inviting, free flow space with activated connections to the plaza and adjacent developments, where encounters with art and community are made easy.

Rooted in lost history, the project is about the reconciliation of cultures and defining identity in an ever changing world. The distinctive pitched roof of the community building refers to the primary silhouette of early settlers' houses – weaving in another layer to the narrative of place. The result is a hybrid form that merges the Aboriginal origins with the legacy of early settlers and the industrial materiality and language of the nearby harbour. This reconciliation of difference lies at the heart of the proposal and articulates our enthusiasm about issues of place and identity.



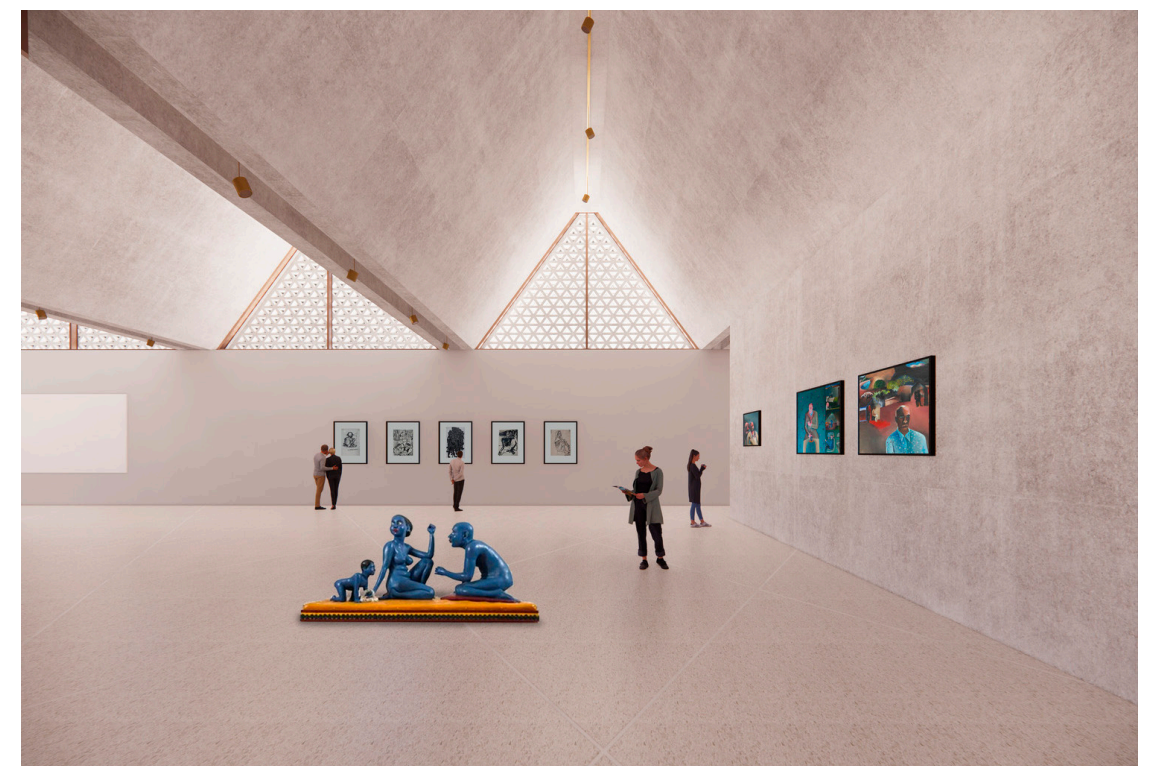


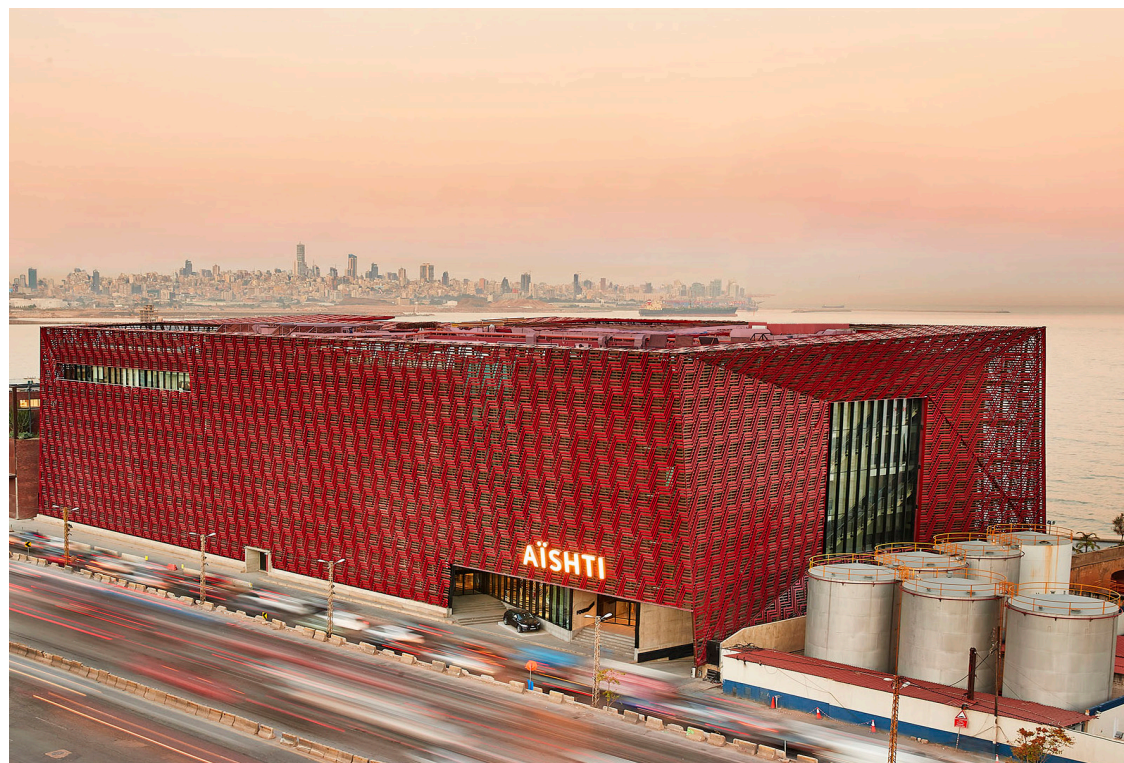
KIRAN NADAR CULTURAL CENTRE
 100,000m² Museum of Art/Cultural Centre
 New Delhi, India
 RIBA Stages 1- 6 (Under Construction)
 2022

The Nadar Cultural Centre is a dynamic and modern space that aims to promote contemporary Indian art and culture. Located in Delhi, one of the world's oldest cities, the center draws inspiration from its historical context to become a vibrant cultural force. The architectural design features a chequered arrangement of independent volumes with internal courtyards allowing natural light to enliven the campus.

The proposal unfolds the center as a network of connected spaces, offering moments of reflection and introspection before immersing visitors in a world of art and ideas. The ground floor plan is organized into a grid of 8x8 meter squares, supplemented by various facilities such as galleries, exhibition spaces, auditoria, offices, and retail areas.

At the heart of the design lies a large span system of V-shaped beams, providing both structural support and a distinctive aesthetic. These beams, made of untreated white concrete, contribute to the building's rational and modular form, eliminating the need for additional interior finishing, thus enhancing cost-effectiveness and sustainability.





AISHTI FOUNDATION

35,000m² Cultural Complex

Beirut, Lebanon

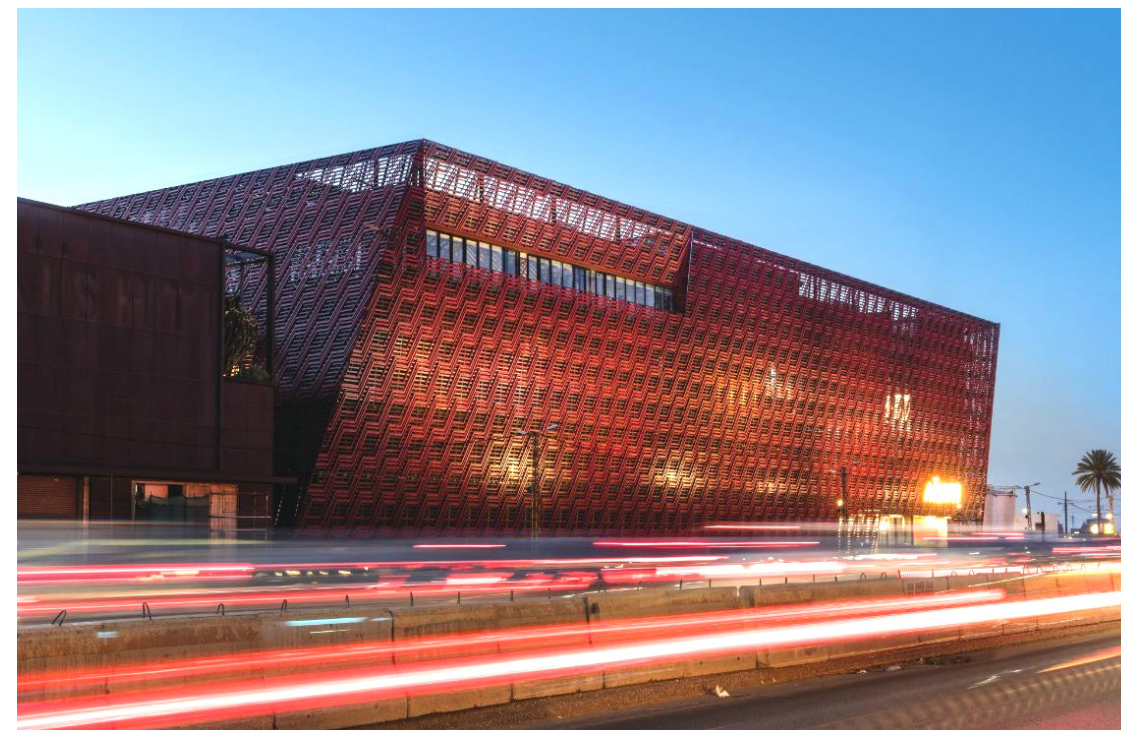
RIBA Stages 1-6

2013

The juxtaposition of art and shopping presented the practice with the challenge to create a design for an entirely new typology that would integrate two, often conflicting, worlds. The concept, therefore, has been to establish a lively architectural dialogue – via a celebration of views into the different spaces (both gallery and retail) as well as a homogenising tiled design that presents a continuous language throughout the building's floor, façade and roof.

The opportunity for flexibility has been a key consideration, so that entrances to the separate uses can be distinct, but there is also the opportunity to connect the entire programme. Doorways, screens and boundaries are therefore highly flexible, demountable, sliding and adaptable. The Aishti Foundation building is located on a brownfield coastal site in central Beirut and replaces a number of previous warehouses, while also fronting onto an enhanced seaside promenade that has been created through land reclamation and the insertion of a playful, undulating landscaping strategy. This immediately defines the site as an amenity and a draw for visitors. In addition, the top level offers a sky bar with striking sea views as well as over the city of Beirut.

The form is a simple block that has been rotated on one edge so that it appears tilted. The retail floors are to one side of the building, configured around a central atrium. The other side of the building accommodates the Aishti Foundation galleries.



OTHER WORKS



KING SALMAN PARK VISITOR PAVILION
(Competition, Winning Scheme)
7.000m² Visitor Centre
Riyadh, Saudi Arabia
RIBA Stages 1- 6 (Under Construction)
2018

- Design and Preparation of competition proposal and submission material.
- Consultant liaison and coordination of structural and mechanical packages.
- Tender and construction documents preparation.



LATVIAN MUSEUM OF CONTEMPORARY ART
(Competition, Winning Scheme)
7.000m² Art Museum,
Riga, Latvia
RIBA Stages 1- 4 (Suspended)
2017

- Design and Preparation of competition proposal and submission material.
- Consultant liaison and coordination of structural and mechanical packages.
- Tender and construction documents preparation.



FIVE STRAND
(Competition, Winning Scheme)
14.000m² Resi/Office Complex
London, UK
RIBA Stages 1-3 (Planning Approved - Unbuilt)
2016

- Design and Preparation of competition proposal and submission material.
- Consultant liaison and coordination of structural and mechanical packages.
- Preparation of Planning Application Report for Westminster Council and English Heritage.



VALEXTRA
20m² Instore Concession
London, UK
RIBA Stages 1-6 (Built)
2015

- Design and Preparation of proposal and submission material
- Tender and construction documents preparation
- Construction monitoring and supervision of satisfactory workmanship.



LIVERPOOL BIENNIAL
160m² Temporary pavillion
Liverpool, UK
RIBA Stages 1-6 (Built)
2014

- Design and Preparation of design proposal and submission material
- Tender and construction documents preparation
- Construction monitoring and supervision of satisfactory workmanship.



EPHEMEROPTERAE PAVILION VIENNA
2.5X6.7m Temporary Pavilion
Vienna, Austria
RIBA Stages 1 - 6 (Built)
2012

- Design and Preparation of design proposal and submission material
- Tender and construction documents preparation
- Construction monitoring and supervision of satisfactory workmanship.



FEME LONDON HEADQUARTERS
950m² Corporate Headquarters
London, UK
RIBA Stages 1 - 6 (Built)
2010

- Design and Preparation of design proposal and submission material
- Tender and construction documents preparation
- Construction monitoring and supervision of satisfactory workmanship.



COS STORES EUROPE
COS Stores Frankfurt, Barcelona, Milan, London
London, UK
RIBA Stages 1 - 6 (Built)
2009

- Design and preparation of store fit-outs
- Product design of furnishing pieces for stores
- Tender and construction documents preparation
- Construction monitoring and supervision of satisfactory workmanship.

SANTIAGO CALA

+44 07706170716

santicala@mail.com

www.santiagocala.com